

LOOP-LOC "IMAGE-LOC"

HOW TO PHOTO MEASURE A POOL FOR A SAFETY COVER

Tools Required:

- Digital camera with a minimum of 5 mega pixel capacity
- 2 self locking tape measures
- 4 visible items, preferably 2x4 pieces of wood or bricks (labeled).
- Step stool or small ladder (recommended)

***NOTE: In all cases: IPHONES, IPADS or Cellular Phones cannot be used.**

Getting Ready:

- Remove any floating toys, rafts or solar covers
- Clear away patio furniture and any moveable obstructions in the pool deck area
- If there is a waterfall or hose emptying into the pool it must be turned off for this process. Hoses should be removed.

Setting up Tape Measures

- A minimum of **two** tape measures must be used. Using a length of 10 feet, place both tape measures as close to the pool as possible, in 2 different locations. Whenever possible have both tape measures measure the same exact length.
*Crossing the waterline is permissible as long as the tape measure remains taut and expands over no more than 5 feet of the open pool.
- Place a visible item (such as a block of wood) at the start of each tape measure and at the ending foot mark of each tape measure. This results in a definite measurement from the inside of one item to the other. (Place the wood flush with the tape measure).

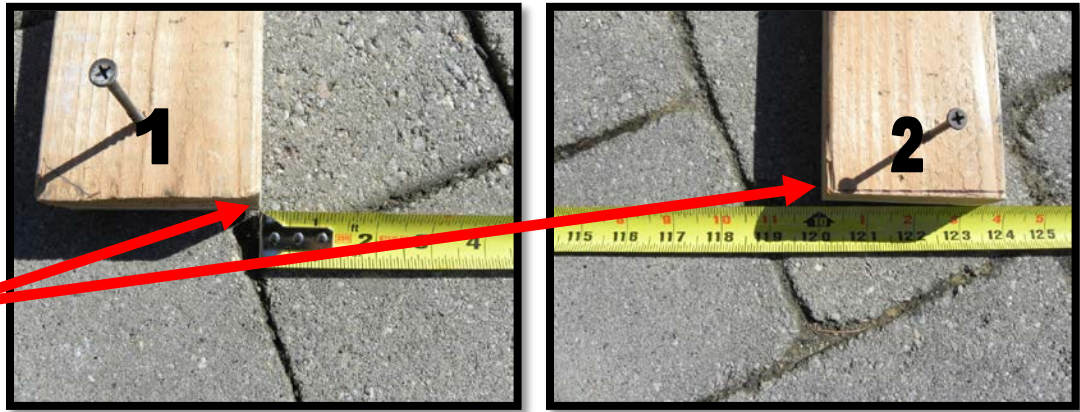


- The 2 tape measures and 4 visible items cannot be moved during the photo taking process. If there is any shift or movement in either tape or visible object while taking photos the entire process must be restarted or the measurements will be inaccurate.
- Turn on camera and leave at the widest setting – **“Do Not Zoom ”**. **NEVER use Panoramic setting.** **Do not adjust the zoom at any time once the process has begun, not even for obstructions or special treatment areas**
- ***NOTE: In all cases: IPHONES, IPADS or Cellular Phones cannot be used to take photos. This is for all newer iphones, ipads and cellular phones also.**

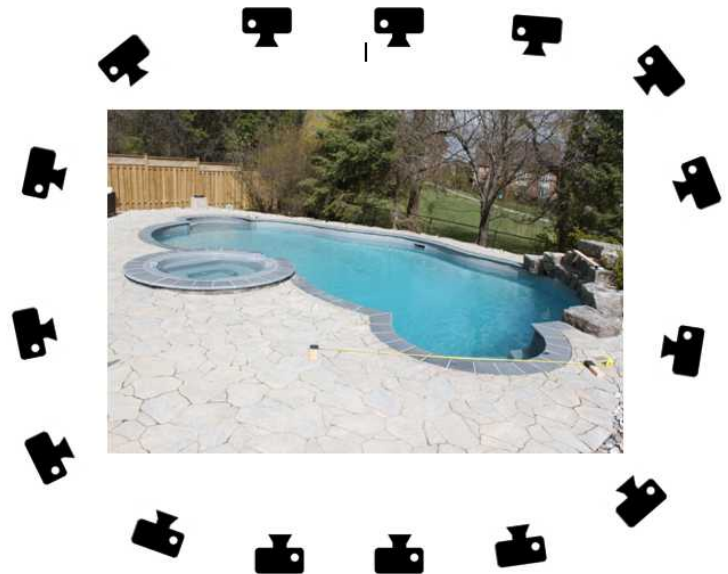
Taking Pictures of the Tape Measures & Pool Perimeter

- First and most important: Take a close up picture of the *start and end points* of **both** measuring tapes. (Do this for any items used on top of uneven ground or landscaping as well-see pg.3). **Do not adjust zoom for these or any pictures.**

Remember to place the items flush with measuring tape

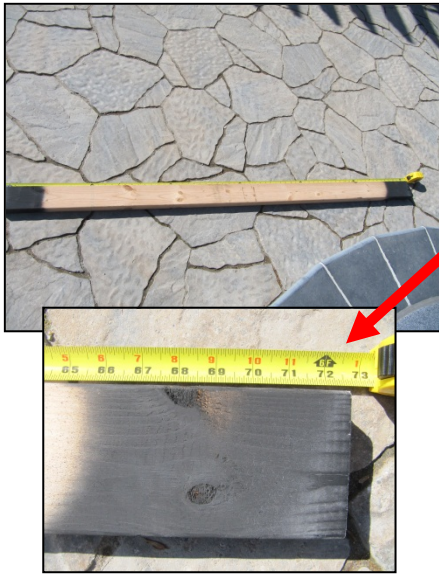


- Next: Take your first picture of the pool standing as far back as possible, making sure the entire perimeter of the pool and **both** measuring tapes are in the frame
- Move clockwise around the pool perimeter taking a picture every few steps. Try to capture the entire pool and tape measures in the frame in every picture. When this is not possible still take a photo. It is recommended to take a minimum of **20-25 pictures**.
- If possible please take pictures from different **elevations**, using ladder or raised area. If your pool and/or spa has height variations it is important to take multiple photos from higher elevations. **REMEMBER DO NOT ADJUST THE ZOOM.**
- *Different elevations can be accomplished by standing on a ladder and/or raising your hands high over your head to take the picture.*



Uneven Ground

- For uneven ground or on top of landscaping structures, use a 10 foot long, solid, visible item, such as a 2x4 piece of wood or surveyor rod (for example).



Remember to place solid, straight item of known length on areas of uneven ground or on top of special landscaping.

Take a picture of both ends of the item with a measuring tape as well.

Take multiple pictures of special features, from different locations using different elevations at each position (chest level, crouching and hands above head) **DO NOT ZOOM**



Taking Pictures of Special Features

- For special features such as caves, take close-up or isolated pictures of those areas (similar to the pictures above). **Do NOT Zoom in for special features.**
- Remember that the long, solid item of known length (as previously described – i.e. a 10 foot 2x4) must be visible in these pictures. (Make sure that this item is placed on the special feature at the very beginning of the picture taking process).
- Position yourself on the pool edge (on the opposite side or near the special feature) to take these pictures.
- Use different elevations and move from left to right. Different elevations can be accomplished by crouching, taking normal pictures at chest height and raising your hands above your head.
***for complex pools with multi-elevation changes, intricate features or commercial sizes please request our Complex Photo Measure Instructions or contact your Loop-Loc Sales Representative*

IMAGE-LOC – “A PICTURE IS WORTH A THOUSAND MEASUREMENTS”